

Port Community Arts Centre

March 2008 Newsletter No 15.

To communicate: Please contact

Port Community Arts Centre
Black Diamond Centre
66 Commercial Road
Port Adelaide SA 5015

Or - leave a message on
answering machine
Ph/Fax (08) 8341 2430
Email - pcac@arcom.com.au

www.geocities.com/portcommunityarts/



Our First International Art Exhibition “Out of Africa”

This exhibition was well received by the more than 60 people who attended the opening. The show was introduced by Colin Alagich, opened by John Ford, and followed by a short speech from the Chairperson of the local Eritrea community. The work is by two artists - Samson Hadish & Bereket Tesfamichael - both in their early twenties. All work was acrylic on canvas in vibrant colours. Sales went very well. So far 19 out of 50 paintings have sold. Thank you to Romeo's Foodland IGA for their support in supplying the very welcome selection of food for the opening!

An excellent afternoon was had by all. It has already been suggested that Colin look at another show in the future. Although there was a good presence at the opening the lack of PCAC members was very noticeable. Please try & support the Gallery openings..

Thank you Colin for choosing Black Diamond Gallery
A great effort on your first exhibition.

Official opening picture on right – Colin Alagich
– Chairperson of local Eritrea Community and John Ford



Next Exhibition March 8th to 23rd

FARM; *Remember when - a journey of life*

Belinda Blessing Invites you to the official opening at 2.00 pm
Saturday 8th March. Open daily 11am to 4 pm

Next Members Exhibition.

“As you like it” May 17th to June 1st

You have 10 weeks to prepare for this exhibition.

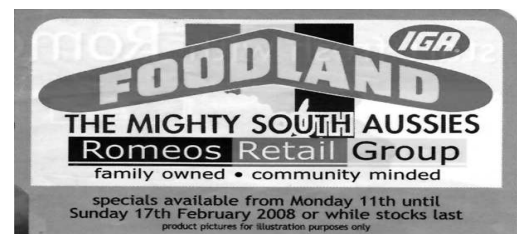
Let's see some new artists exhibiting in this show.

Registration forms will be posted shortly – This exhibition is in lieu of the advertised April member show. In the past this exhibition has been themed to reflect things of a historical nature. However, in line with our new policy (see Page 3) this will be a non-themed affair, the first week coinciding with History Week. We borrowed the title from Mr Shakespeare because it aptly describes the choices members can make in deciding what to paint for the exhibition. Submit up to five paintings of your choice .

Mick Freeborn
Gallery Coordinator



CITY OF
Port Adelaide Enfield



New Product

PORT ART SUPPLIES

Fredrix Watercolour Canvas

What Is Watercolour Canvas?



Fredrix Watercolour Canvas is an authentic 100% woven cotton artist canvas with a special coating that performs similar to cold press or rough watercolour paper, yet it provides a distinctive look that can only be achieved on canvas. Fredrix Watercolour Canvas will accept all watermedia and mixed media techniques.

For Example: Transparent and opaque watercolours, acrylic and watercolour inks, fluid acrylics, and watercolour pencils. Fredrix Watercolour Canvas will also work with traditional acrylic paints in different viscosities.

Advantages of Watercolour Canvas

- **Archival Quality** – Fredrix Watercolour Artist Canvas is manufactured with acid-free materials and is guaranteed to be 100% Archival Quality.
- **No Buckling** – Fredrix Watercolour Canvas on stretcher strips and Fredrix Watercolour Archival Boards will not buckle like watercolour paper when wet. Watercolour canvas rolls and pads, which come in various sizes, can be cut to any size and should be stapled (or taped) either wet or dry to a ¾” board (i.e. Gatorboard) to prevent buckling.
- **Durability** – Fredrix Watercolour Canvas will not tear like paper does, therefore scratching or scraping the surface will not harm the canvas, and removing the canvas from supports (like Gatorboard and stretchers) will not damage your artwork.
- **Wet on Wet Technique** – Fredrix Watercolour Canvas can be brushed with water on one side (or both), and will perform like wet watercolour paper. The canvas will stay damp longer than paper, so some experimentation may be necessary. The pre-stretched canvas and canvas boards will NOT buckle like paper. The canvas sheets will buckle, so we suggest that you staple or tape to a board.
- **Plein Air** – Fredrix Watercolour stretched canvas and canvas boards are excellent for painting outdoors (plein air) in watercolour, especially since you will not need to bring any supports, as you would for watercolour paper, and as stated before NO buckling!
- **Large Sizes** – Available in large pads and boards in sizes up to 18” x 24”, pre-stretched canvas up to 24” x 36” and in rolls 58” x 3yds and 58” x 6yds. These will work great for large paintings that previously could not be done in watercolour, and are ideal for mural work.

Framing Without Glass – If you wish to frame without a mat or glass (similar to oil or acrylic paintings), spray with a good artist quality spray varnish to protect the surface from damage.

Then frame as you would any canvas.

This information has been provided with the aim of keeping our Artist Community up to date on any new products that arrive in store or with other product information that may be of interest.

Article by Suzie Lockery.

Please Note – Demo of New Water Soluble Products

New water-soluble Pencils etc are now available at Port Art Supplies. They include Inktense Pencils, Graphitint Pencils & Tinted Charcoals. Arrangements have been made for a sales person to travel from Sydney to give a free demonstration of these products at the Black Diamond Gallery, Port Community Arts Centre on the Monday March 31st at 1.30 pm. **Contact Suzie - Mon, Tues, Friday at the shop - Phone 82410059 to register your attendance.**

Please visit us at **PORT ART SUPPLIES** – 83 Commercial Road, Port Adelaide PH: 82410059
OPEN: Mon – Fri 9am to 5pm & Saturday 9am to 2pm ~ Proud Sponsors of PCAC

Notice Board

AFFORDABLE ARTISTS STUDIO SPACE IN THE PORT?

Jacqueline Coates 3 day workshop at Kapunda
Evening Sunday 30th March
7pm – 9 pm
Monday 31st March &
Tuesday April 1st 10am - 4pm .
Wednesday April 2nd
10am – 5pm
Contact Jacqueline
08 85663827 - 0412587438
for other information

A number of vacant first floor commercial tenancies still exist in the Port and we are keen to explore with interested parties the feasibility of leasing and converting some of these vacancies into affordable artist's studios / work space.

How much would you be willing to pay for studio space? How much space do you need? What other features would you like to see in an artist's studio? What is the collective noun for a cluster of artist's studios? Send your thoughts and ideas to info@the-portcom.au

If you have any questions please do not hesitate to contact me

0411779 611.(08) 8440 3133 Many thanks **André Stuyt**

Port Centre Coordination Group

NEW POLICY

The Board of PCAC thank the 6 members out of 120 for returning their survey forms from the January Newsletter and for their comments & various offers of help. If any more of you have second thoughts about filling in the survey we would still like to hear from you.

Other feedback has been received from members on what type of exhibitions we should be mounting. The majority have indicated their preference for non-themed exhibitions.

Accordingly the board has decided to stage two non-themed, and one themed exhibition - namely "Celtica" - per year from now on.



Have you something you would like to sell ?

Any comments or interesting articles ?
Advertise in the next newsletter due out
1st week of May 2008

Welcome to New Members

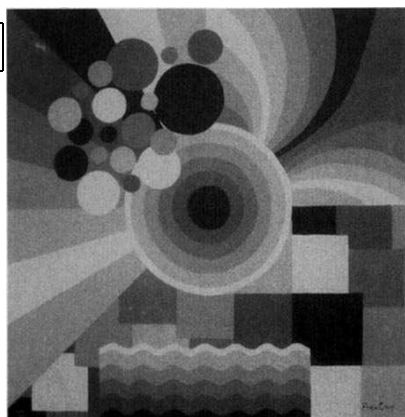
Rod Cowin

Elizabeth Webb

Thank you for joining PCAC

Please support us in our activities

29.6.1960.-.22.1.2008



In Memory of Fran Coop

Fran passed away after a two year battle with a brain tumour. Her funeral was well attended and, following Fran's wishes, everyone came in bright, casual clothes. She will be sadly missed by her Board Associates and artistic friends. The Board of PCAC, with permission from Fran's family, have decided to rename the Peoples Choice Award.

It will now be known as -

"The Fran Coop Peoples Choice Award"

What's on the Label

Ever wondered what the little stars mean on your paint tubes? Or why paints, made from the same pigments, have different names depending on the brands? Indeed, within the cryptic code and mysterious characters on the paint tube label, you'll find vital information about how the colour will perform. The reason for the short hand? Manufacturers have the unenviable task of working out how to include all their information on a label no bigger than a postage stamp.

It's like trying to stuff an elephant into a thimble!

Here's a point by point guide on the key bits you'll find included on most manufacturers "Paint Labels".

PRODUCT NAME – This one is obvious ie - *Windsor & Newton*

PIGMENT NAME – In an ideal world all product names would include reference to pigment name(s) since each pigment has known, unique, working properties regardless of the product name on the label. It's the pigment (or blend of pigments) that determines how the colour will perform.

SERIES NUMBER ---- Manufacturers of the really good stuff - the true 'Artist Colour' - price their ranges in series. The bigger the number the higher the price! Colours with high priced pigments obviously cost more. Note. Just because a colour costs more doesn't mean it's better.

PERMANENCE & LIGHTFASTNESS .

All reputable manufacturers include some code or other on the label to help you ascertain the expected permanence and/or lightfastness of the colour.

Some use a star system (***) is the most lightfast)

Some use Letters (AA most lightfast)

Some rely solely on the ASTM ratings - (American Society for Testing Materials) - (ASTM I or II) being considered the best.

HEALTH AND SAFETY – (ASTM D-4236)

USA standard for toxicology and potential health risk enacted in 1990.

"AP" (Approved Products) Seals.

Art and Creative Materials Institute (ACMI) States that the AP seal is only given to products that are found to contain no material which will be injurious to humans, including children.

"CL" (Cautionary Label)

Again issued by ACMI for specific caution – Read the label if not sure.

"O" Stands for opaque. Or some use the symbol

"T" Stands for Transparent

"SO" Semi opaque

"G" Granulating.

With some Acrylics and Oil paints some manufactures will put a code on the tube to indicate the "Colour Bias" of product.

I hope this information will assist some of you when you are buy your next tube of paint.

